

beautyguide



Allium
Allium species



Alternate-Leaved Dogwood
Cornus alternifolia



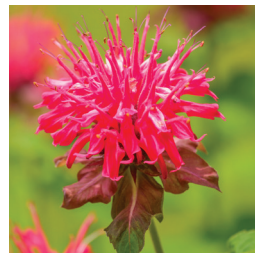
Aster
Asteraceae species



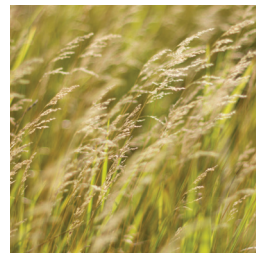
Balloon Flower
Platycodon grandiflorus



Beardtongue
Penstemon species



Bee Balm
Monarda didyma and fistulosa



Big Bluestem
Andropogon gerardii



Black-Eyed Susan
Rudbeckia hirta



Blanket Flower
Gaillardia



Blazing Star
Liatris spicata



Blue Vervain
Verbena hastata



Blue Flag Iris
Iris versicolor



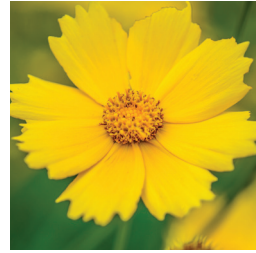
Butterfly Weed
Asclepias tuberosa



Canadian Hemlock
Tsuga canadensis



Coral Bells
Heuchera species



Coreopsis
Coreopsis species



Creeping Thyme
Thymus species



Crocus
Crocus



Daffodil
Narcissus



Daylily
Hemerocallis



False Blue Indigo
Baptisia australis



Forsythia
Forsythia



Giant Hyssop
Agastache foeniculum



Grape Hyacinth
Muscari



Hardy Rose
Rosa rugosa



Hens and Chicks
Sempervivum tectorum



Hollyhock
Alcea rosea



Hosta
Hosta



Hyacinth
Hyacinthus orientalis



Hydrangea
Hydrangea paniculata



Little Bluestem
Schizachyrium scoparium



Moss Phlox
Phlox subulata



Mum
Chrysanthemum



Ninebark
Physocarpus opulifolius



Oriental Poppy
Papaver orientale



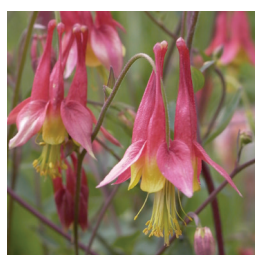
Peony
Paeonia species



Prairie Smoke
Geum triflorum



Purple Coneflower
Echinacea purpurea



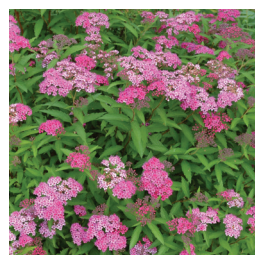
Red Columbine
Aquilegia canadensis



Serviceberry
Amelanchier canadensis



Solomon's Seal
Polygonatum biflorum



Spirea
Spirea bumalda



Sugar Maple
Acer saccharum



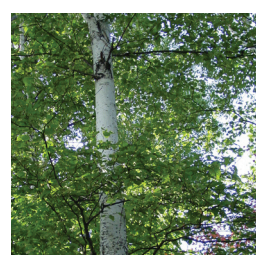
Tall Phlox
Phlox paniculata



Tulip
Tulipa



Tulip Tree
Liriodendron tulipifera



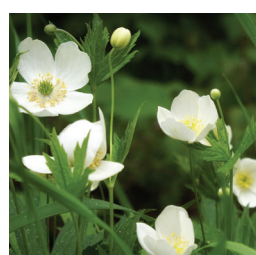
White Birch
Betula papyrifera



White Spruce
Picea glauca



Wild Geranium
Geranium maculatum



Wild Strawberry
Fragaria virginiana

| COMMON NAME | LATIN NAME | BLOOM SEASON | MOISTURE | SUN REQUIREMENTS | BLOOM OR LEAF COLOUR | CONTAINER PLANT | ATTRACTS WILDLIFE | SPREAD | HEIGHT | ANNUAL/PERENNIAL |
|---------------------------|------------------------------|------------------------|------------------|------------------------|---|-----------------|----------------------------------|--------------------|---------------------|--------------------|
| Allium | Allium species | spring to summer | average to dry | full sun | Bloom: purple, pink, yellow, blue, white | no | bees, butterflies | 45 cm (18") | 30-60 cm (12-24") | perennial |
| Aster | Asteraceae species | summer to fall | moist to dry | full sun | Bloom: purple, pink, white, blue | yes | birds | 60 cm (24") | 45-100 cm (18-39") | perennial |
| Balloon Flower | Platycodon grandiflorus | mid to late summer | average to dry | full to part shade | Bloom: blue, white, pink | yes | birds, bees, butterflies | 15-20 cm (6-8") | 60-120 cm (24-47") | perennial |
| Beardtongue | Penstemon species | spring to summer | moist to dry | mostly sun | Bloom: yellow, purple, pink, red | yes | bees, butterflies | 25 cm (10") | 125 cm (49") | perennial |
| Bee Balm | Monarda didyma and fistulosa | summer | average to moist | mostly sun | Bloom: blue, pink, red, purple | yes | birds, butterflies, bees | 60-90 cm (24-35") | 90-120 cm (35-47") | perennial |
| Big Bluestem | Andropogon gerardii | summer to fall | dry to moist | mostly sun | Leaf: purple, green | no | birds | 60-90 cm (24-35") | 100-200 cm (39-79") | perennial |
| Black-Eyed Susan | Rudbeckia hirta | summer | average to moist | mostly sun | Bloom: yellow | yes | birds, butterflies, bees | 30-60 cm (12-24") | 45-75 cm (18-30") | perennial |
| Blanket Flower | Gaillardia | summer to fall | dry to moist | full sun | Bloom: red, yellow | yes | butterflies | 45 cm (18") | 45-65 cm (18-26") | perennial/biennial |
| Blazing Star | Liatris spicata | summer to fall | average to moist | full sun | Bloom: purple, pink | yes | birds | 20-30 cm (8-12") | 60-120 cm (24-47") | perennial |
| Blue Vervain | Verbena hastata | summer to fall | moist to average | mostly sun | Bloom: blue, purple | no | birds, butterflies | 60-90 cm (24-35") | 30-180 cm (12-71") | perennial |
| Blue Flag Iris | Iris versicolor | spring to summer | moist to wetland | full sun | Bloom: purple | no | birds, butterflies | 20-80 cm (8-31") | 20-80 cm (8-31") | perennial |
| Butterfly Weed | Asclepias tuberosa | summer to fall | dry | mostly sun | Bloom: orange | no | butterflies, bees | 60-75 cm (24-30") | 60-75 cm (24-30") | perennial |
| Canadian Hemlock | Tsuga canadensis | all year | well-drained | mostly sun | Leaf: green | no | birds | 4.5 m (15') | 12 m (40') | coniferous |
| Coral Bells | Heuchera species | summer | dry to moist | mostly shade | Leaf: red, orange, green, blue, burgundy, purple | yes | butterflies | 30 cm (12") | 20-30 cm (8-12") | perennial |
| Coreopsis | Coreopsis species | summer to fall | average to dry | full sun | Bloom: yellow | yes | birds, butterflies | 30-45 cm (12-18") | 60-75 cm (24-30") | perennial |
| Creeping Thyme | Thymus species | early summer | dry to average | full sun | Bloom: red,orange,yellow,burgandy,pink, purple | yes | N/A | groundcover | 10 cm (4") | perennial |
| Crocus | Crocus | spring and fall | dry to moist | mostly sun | Bloom: white, purple | yes | N/A | 5-10 cm (2-4") | 5-15 cm (2-6") | perennial |
| Daffodil | Narcissus | spring | average to dry | mostly sun | Bloom: yellow,orange,white, pink | yes | N/A | 15-22 cm (6-9") | 45-69 cm (18-27") | perennial |
| Daylily | Hemerocallis | spring to fall | dry to moist | mostly sun | Bloom: red, orange, green, blue, burgundy, purple | yes | N/A | 60-90 cm (24-35") | 60-90 cm (24-35") | perennial |
| Dogwood, Alternate-Leaved | Cornus alternifolia | spring to summer | dry to moist | mostly shade | Bloom: white | no | birds, bees, butterflies | 3.6-6 m (12-20') | 3-4.5 m (10-15') | shrub |
| False Blue Indigo | Baptisia australis | spring | average to dry | full sun | Bloom: blue, purple | yes | butterflies | 90 cm (35") | 90-120 cm (35-47") | perennial |
| Forsythia | Forsythia | spring | dry to moist | mostly sun | Bloom: yellow | no | N/A | 2.4-3 m (8-10') | 2.4-3 m (8-10') | shrub |
| Giant Hyssop | Agastache foeniculum | summer to fall | dry to average | mostly sun | Bloom: lavender | no | bees, butterflies | 30 cm (12") | 60 cm (24") | perennial |
| Grape Hyacinth | Muscari | spring | moist to dry | full sun to part shade | Bloom: purple | yes | N/A | 15-22 cm (6-9") | 15-30 cm (6-12") | perennial |
| Hardy Rose | Rosa rugosa | summer | dry to moist | mostly sun | Bloom: pink | no | bees | 1-1.8 m (3-6') | 1-1.8 m (3-6') | shrub |
| Hens and Chicks | Sempervivum tectorum | summer | dry | full sun | Bloom: yellow, pink, green | yes | N/A | 5 cm (2") | 5-20 cm (2-8") | perennial |
| Hollyhock | Alcea rosea | summer | moist to dry | mostly sun | Bloom: red, orange, yellow, blue, burgandy, pink | no | birds, bees | 0.6 m (2') | 1.8-2.4 m (6-8') | biennial |
| Hosta | Hosta | summer | dry to average | mostly shade | Bloom: pink, purple, white • Leaf: yellow, green | yes | bees | 40-100 cm (16-39") | 40-75 cm (16-30") | perennial |
| Hyacinth | Hyacinthus orientalis | spring | average to dry | full sun | Bloom: pink, white, blue, purple | no | N/A | 10-15 cm (4-6") | 15-30 cm (6-12") | perennial |
| Hydrangea | Hydrangea paniculata | summer to fall | moist to dry | sun to part shade | Bloom: white, green | no | birds, butterflies | 3-10 m (10-33') | 0.9-6 m (3-20') | shrub |
| Little Bluestem | Schizachyrium scoparium | summer to fall | dry to average | moslty sun | Leaf: blue, green | no | birds | 30-60 cm (12-24") | 1-1.2 m (39-47") | perennial |
| Moss Phlox | Phlox subulata | spring | moist to dry | full sun | Bloom: purple, pink, white | yes | bees, butterflies | 30-45 cm (12-18") | 5-15 cm (2-6") | perennial |
| Mum | Chrysanthemum | fall | average to moist | sun to shade | Bloom: blue, yellow, green, orange, pink, red, white | yes | N/A | 45-60 cm (18-24") | 45-60 cm (18-24") | perennial |
| Ninebark | Physocarpus opulifolius | spring to early summer | moist to dry | moslty sun | Bloom: white, red • Leaf: purple, red, orange, green | no | birds | 1.2-2.4 m (4-8') | 1.2-2.4 m (4-8') | shrub |
| Oriental Poppy | Papaver orientale | summer | average to dry | full sun | Bloom: pink, white, burgundy, orange, red | yes | N/A | 15-22 cm (6-9") | 15-30 cm (6-12") | perennial |
| Peony | Paeonia species | late spring | average to dry | mostly sun | Bloom: red, orange, green, blue, burgandy, pink, purple | no | N/A | 75-90 cm (30-35") | 75-90 cm (30-35") | perennial |
| Prairie Smoke | Geum triflorum | spring to late spring | dry to average | mostly sun | Bloom: pink | no | N/A | 30 cm (12") | 15-45 cm (6-18") | perennial |
| Purple Coneflower | Echinacea purpurea | summer to fall | average to dry | mostly sun | Bloom: purple, pink, yellow, orange, red | yes | birds, butterflies, bees | 45-60 cm (18-24") | 60-75 cm (24-30") | perennial |
| Red Columbine | Aquilegia canadensis | spring to early summer | moist to dry | mostly sun | Bloom: red | no | birds, butterflies, hummingbirds | 30-40 cm (12-16") | 45-60 cm (18-24") | perennial |
| Serviceberry | Amelanchier canadensis | spring | average to dry | mostly sun | Bloom: white | no | birds, wildlife, bees | 3.6-4.5 m (12-15') | 6.1-9.1 m (20-30') | shrub |
| Solomon's Seal | Polygonatum biflorum | spring to summer | average to moist | shade and part shade | Bloom: white | no | N/A | 60-90 cm (24-35") | 30-90 cm (12-35") | perennial |
| Spirea | Spirea bumalda | spring to summer | dry to moist | sun to shade | Bloom: pink | no | N/A | 60-120 cm (24-47") | 60-120 cm (24-47") | shrub |
| Sugar Maple | Acer saccharum | all year | moist to average | sun to part shade | Leaf: red, orange | no | birds, wildlife | 9 m (30') | 15 m (50') | deciduous |
| Tall Phlox | Phlox paniculata | summer to fall | dry to average | mostly sun | Bloom: orange, red, pink, white | yes | birds | 30-60 cm (12-24") | 30-100 cm (12-39") | perennial |
| Tulip | Tulipa | spring | average to dry | mostly sun | Bloom: blue, green, orange, pink, red, white, yellow | yes | N/A | 15-22 cm (6-9") | 25-75 cm (10-30") | perennial |
| Tulip Tree | Liriodendron tulipifera | late spring | moist to dry | full sun | Bloom: yellow/orange | no | birds, wildlife | 9 m (30') | 15 m (50') | deciduous |
| White Birch | Betula papyrifera | all year | dry to moist | full sun | Leaf: yellow, orange | no | birds, wildlife | 9 m (30') | 15 m (50') | deciduous |
| White Spruce | Picea glauca | all year | average to dry | mostly sun | Leaf: green | no | birds, wildlife | 4.5 m (15') | 12 m (40') | coniferous |
| Wild Geranium | Geranium maculatum | spring to early summer | moist to dry | mostly sun | Bloom: pink, purple | yes | bees | 45-60 cm (18-24") | 30-45 cm (12-18") | perennial |
| Wild Strawberry | Fragaria virginiana | spring to summer | well-drained | full sun | Bloom: white | no | birds, wildlife | 10-15 cm (4-6") | 15-30 cm (6-12") | perennial |